
(SW-OPOS)Setup OPOS Driver(USB)(PS2)

Purpose

The document is aimed to illustrate the procedure for setup OPOS driver and test output.

Scope

This document is applicable to FS310, WD100, WD200, WD300, SD120, SD320, SD500, SD700, SG100, SG300, SG700, LG100, LG300, LG610, LG710, V-1010, V-1030, MIR3+ and IG620 with USB or PS/2 interface.

Requirements

- Scanner + USB/PS2 Cable
- PC + MS-Windows + USB/PS2 Port
- File: OPOS CCOs.msi
- Register File: ChampSCANNERSORegistry.exe
- Demo File: ChampSCANNEROPOSDemo.exe

Procedure

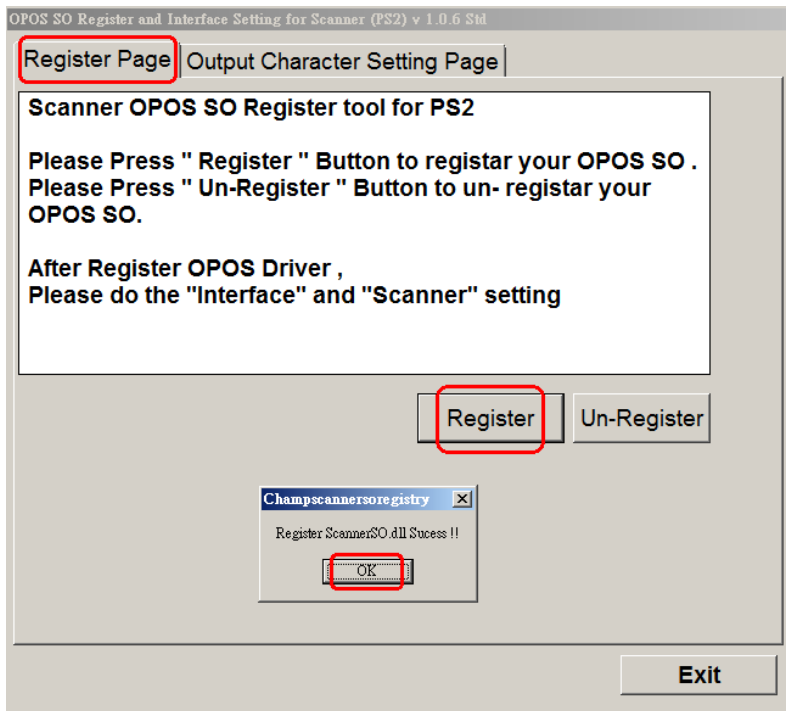
A. Install Driver

-Connect the scanner on PC.

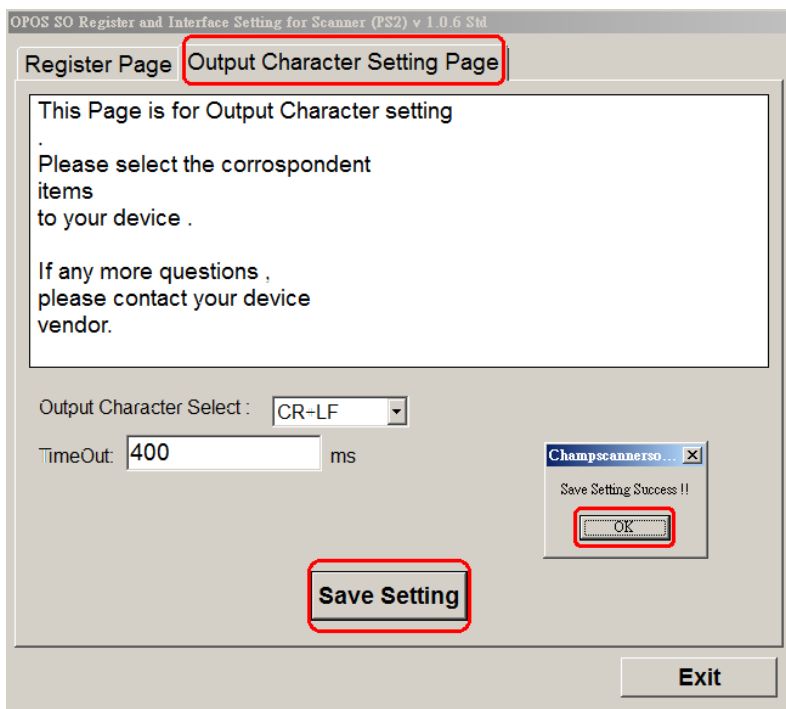
-Double-click "OPOS_CCOs.msi" and follow the wizard to finish the installation.

-Right-click "ChampSCANNERSORegistry.exe" and execute with administrator privilege.

- On "Register Page", click "Register" to register scanner.
- When register successfully, click "OK".



- On "Output Character Setting Page", select proper settings. Click "Save Setting" to save the settings.
- When save successfully, click "OK".

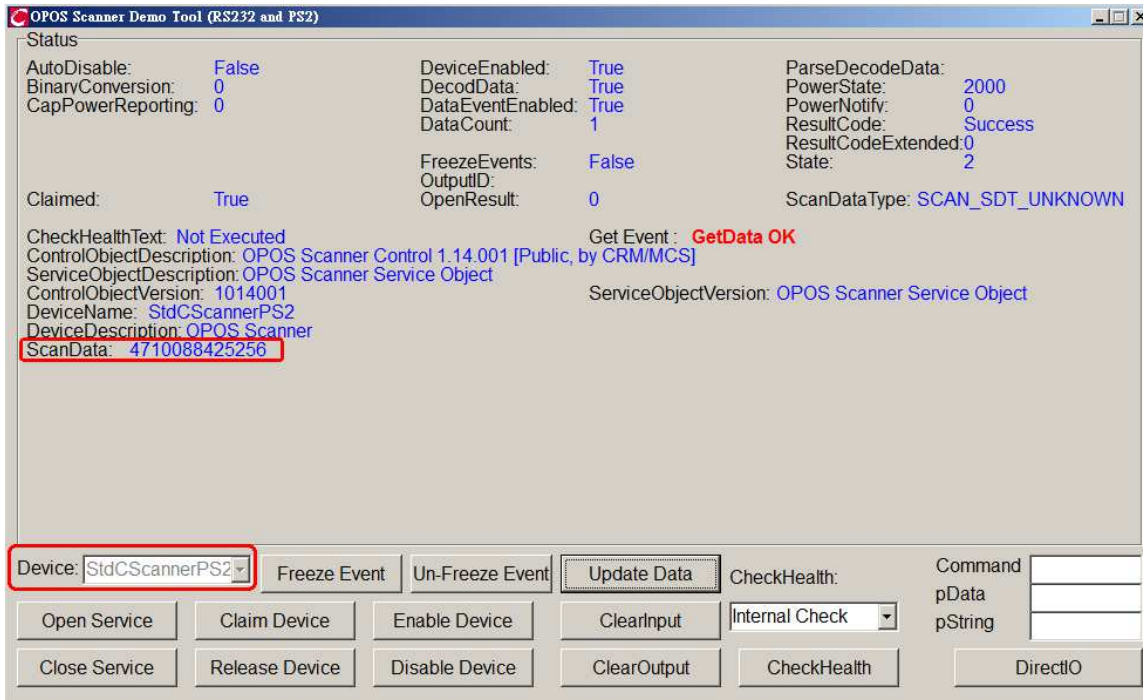


- Click "Exit" to exit the program.

B. Test Output

-Click "ChampSCANNEROPOSDemo.exe" to execute the test program.

-In "Device", select "StdCScannerPS2" for scanner.



-Connect scanner, click:

Open Service -> Claim Device -> Enable Device

-Test output:

Take scanner and scan a barcode. Click "Update Data" to output data.

The scanned barcode is shown at "ScanData".

Click "CleanInput" to clean scanned data. Then scan another barcode and repeat the steps above to test another output if needed.

-Disconnect scanner, click: "Close Service" to release scanner.